



LED LIGHT KIT

WILL FIT *E-Z-GO® TXT®

INSTALLATION INSTRUCTIONS

KIT CONTENTS:

Headlights
Tail Lights
Upgrade Harness
Mounting Screws
Mounting Straps
Light Switch



TOOLS NEEDED:

#2 Phillips Tip
Rotary Cutting Tool
Power Drill
15/32" Drill Bit

Safety Glasses
Marking Pen
Scissors
Tape

LED Headlights



LED Tail Lights

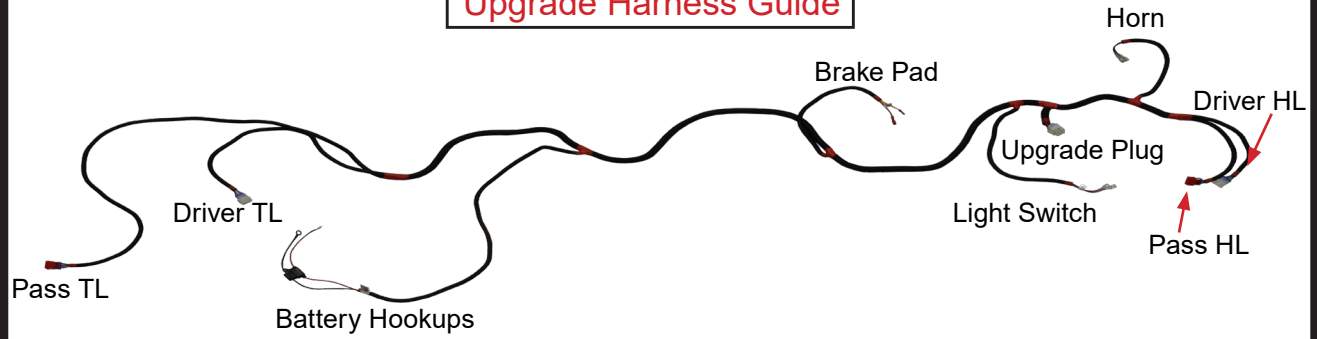


Upgrade Harness



Light Switch

Upgrade Harness Guide



Switch the key to the OFF position, engage the Parking Brake, and flip the cart into TOW mode.



 Scissors & Tape

Place template on front of the cart using the instructions on the template. Trace along the inside with a marking pen.

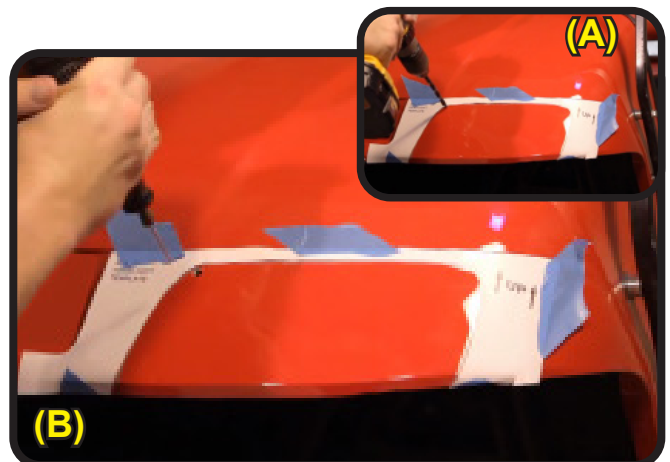



***Flip template over for other side.**

 15/32" Drill Bit, Rotary Cutting Tool, Safety Glasses

A) Drill a pilot hole on the inside of the template line.

B) Cut out headlight hole along the inside of the marked line using a cutting tool.



 #2 Phillips Tip

Use sandpaper to smooth edges if needed. Insert headlight and attach to cart using the screws provided.

*Flip template over to use on other side and repeat Steps 2 - 4.




Feed front of the harness down through the front of the battery component and under the cart.

Route the harness through the holes in the frame as shown and use the zip ties provided to secure in place.

Continue to feed the wire harness up into the cowl/dash area.

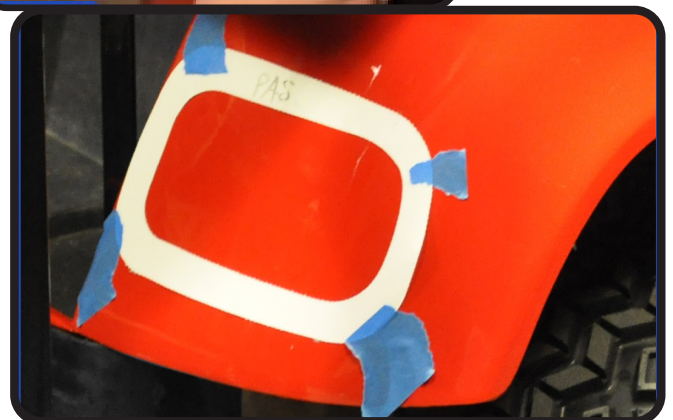
Attach front headlights to wire harness (red connectors to Pass side). Secure with zip ties.



 Tape Measure, Marker, Tape

Using the measurements provided on your tail light template, measure and mark your template. Use a marking pen to trace the inside line.

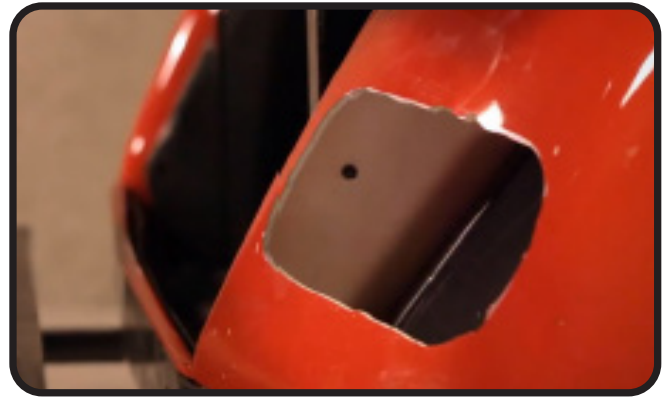
*Flip template over to use on other side.



 15/32" Drill Bit, Rotary Cutting Tool, Safety Glasses

Next drill a pilot hole so you will have a starting point and then begin cutting. Use sandpaper to smooth edge.

Run the rear (shorter) tail light wire under the seat and over the tire well on the drivers side. Red 3 pin connector goes to the Pass side.




 #2 Phillips Tip

Attach rear tail light wire harness. Then place tail light into the rear of the vehicle. Insert four screws into tail light using supplied hardware. Secure wire with ties.

*Repeat process on other side.



 15/32" Drill Bit

Using a 15/32" bit, drill out the hole for the **Light Switch**.

*Drill gently and ensure mounting location is free of obstacles.



If needed, temporarily remove cup holder by pulling towards rear of the cart to free mounting tabs.

Remove ring nut on back of switch and feed threaded end of switch through the dash where the hole was drilled.



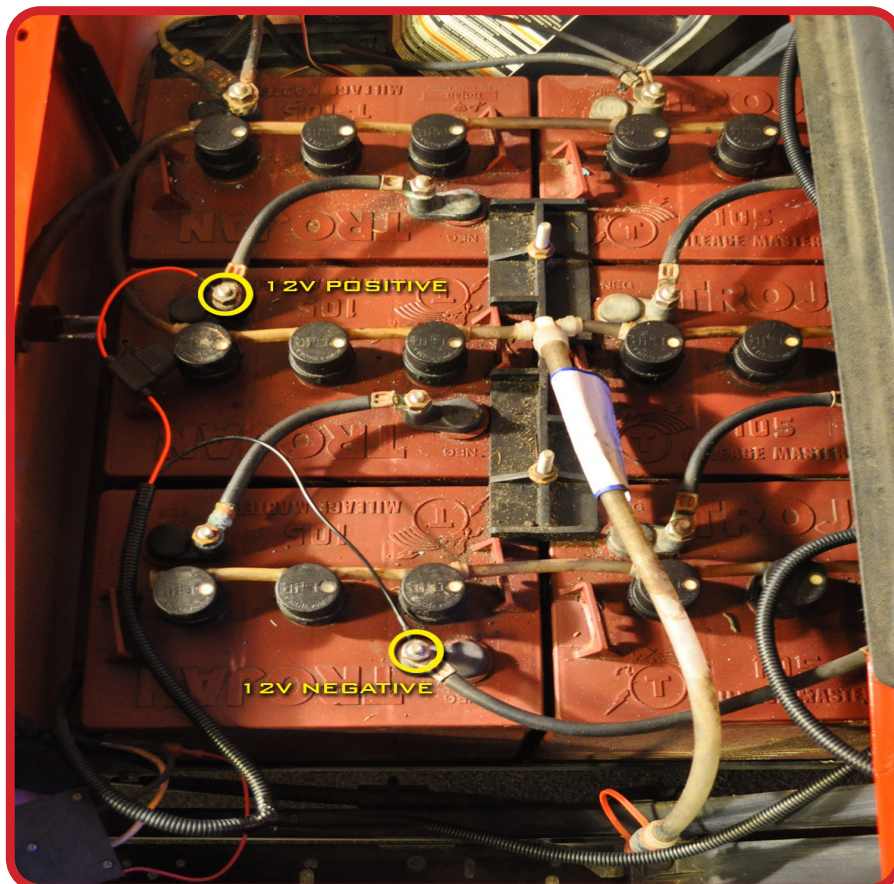
Secure switch with ring nut from Step 11.

Attach Blue and Red wires to male spade terminals on **Light Switch**, there is no orientation for wire connections.



Battery Pack Connections

Choose two batteries side by side that are connected in series. Using a multimeter, ground probe to negative of one battery and positive probe to positive of 2nd battery to check for 12 volts. This is where you will attach the positive (red) and negative (black) terminals from light kit.



INSTALLATION COMPLETE